

DETROIT RIVER
FLOW

Dominant Lands
(77 Sunset Strip)

PLAN OF SURVEY OF
PART OF LOT 39
CONCESSION 1
GEOGRAPHIC TOWNSHIP OF SANDWICH WEST
TOWN OF LASALLE
COUNTY OF ESSEX

SCALE 1 : 300 METRES
SURVEYORS ON SITE INC.
THE INTENDED PLOT SIZE OF THIS PLAN IS 457mm IN WIDTH BY 610mm IN HEIGHT WHEN PLOTTED AT A SCALE OF 1:300.

- LEGEND
- MONUMENT FOUND
 - MONUMENT PLANTED
 - S-B STAIRCASE IRON BAR
 - IB IRON BAR
 - M MEASURED
 - S SET
 - O1 INSTRUMENT R1316161
 - O2 INSTRUMENT R183681
 - O3 INSTRUMENT S555202
 - P1 PLAN 12R-7236
 - P2 PLAN 12R-10097
 - 1201 CLARKE SURVEYORS LTD., O.L.S.
 - A C.G.R. ARMSTRONG O.L.S.
 - OU ORIGIN UNKNOWN
 - WT WITNESS

Easement Lands
(Private road - Sunset Strip)

NOTES

- DISTANCES AND COORDINATES SHOWN ON THIS PLAN ARE IN METRES AND CAN BE CONVERTED TO FEET BY DIVIDING BY 0.3048.
- DISTANCES ON THIS PLAN ARE HORIZONTAL GROUND DISTANCES AND CAN BE CONVERTED TO GRID DISTANCES BY MULTIPLYING BY THE AVERAGE COMBINED SCALE FACTOR OF 0.999944490.
- BEARINGS ARE UTM GRID DERIVED FROM NETWORK RTK GPS OBSERVATIONS (SWARTNET) ON MONUMENTS (S) AND (O) AS SHOWN HEREON, HAVING A GRID BEARING OF 185°50'00" N, NAD83 CGRS (2011.0) AND ARE REFERRED TO THE CENTRAL MERIDIAN OF UTM ZONE 17 (81° W LONGITUDE).
- FOR BEARING COMPARISONS, THE FOLLOWING ROTATIONS WERE APPLIED:
P1 - 1°02'30" CLOCKWISE
P2 - 0°35'10" CLOCKWISE
O1 - 1°19'40" CLOCKWISE

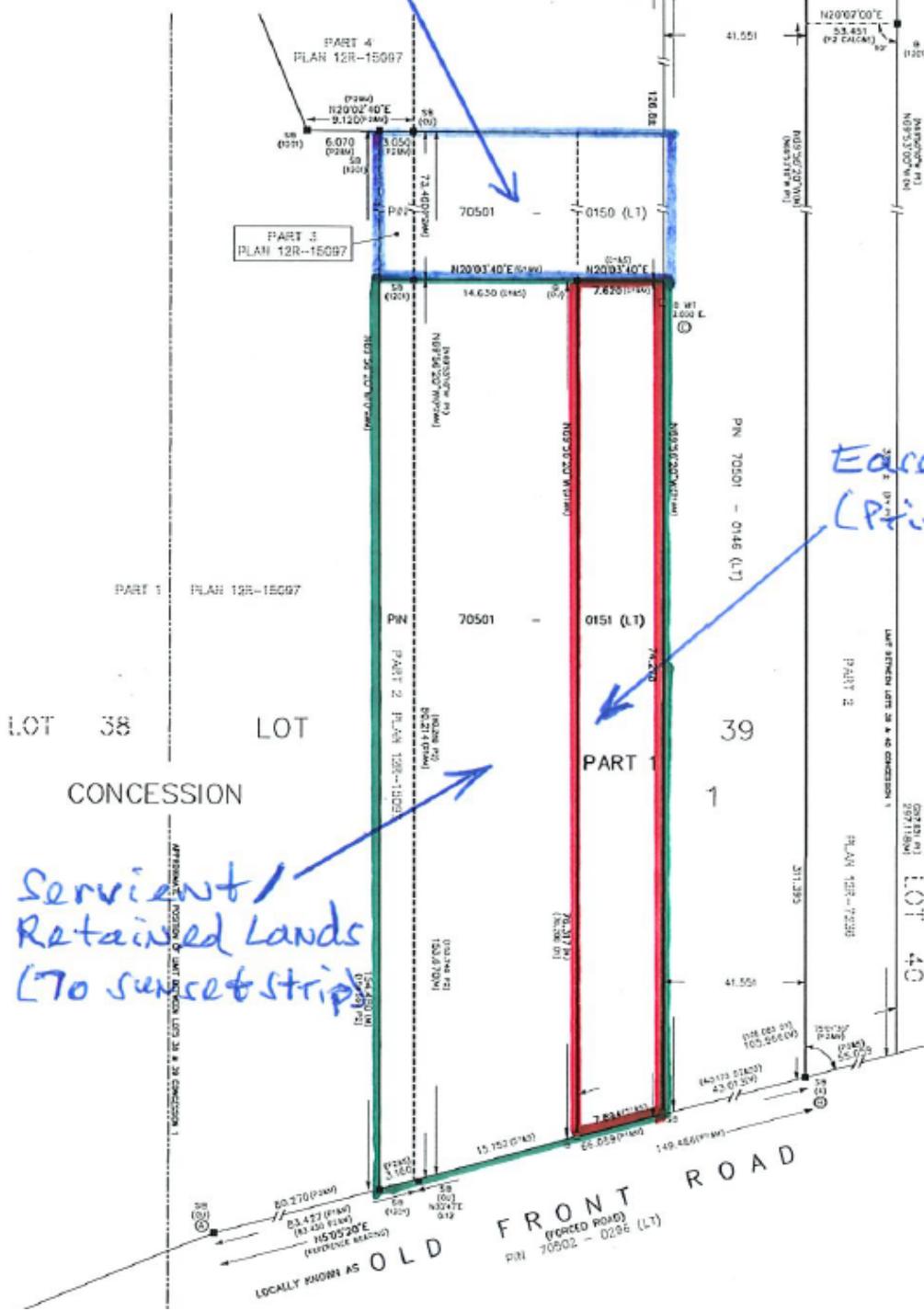
SURVEYOR'S CERTIFICATE

- I CERTIFY THAT:
1. THIS SURVEY AND PLAN ARE CORRECT AND IN ACCORDANCE WITH THE SURVEY ACT, THE SURVEYORS ACT, THE LAND TILES ACT AND THE REGULATIONS MADE UNDER THEM.
 2. THE SURVEY WAS COMPLETED ON THE 3th DAY OF JANUARY, 2024.

JUNE 11, 2024
ROBERT BAIWACK
ONTARIO LAND SURVEYOR
THIS PLAN OF SURVEY RELATES TO AOLS PLAN SUBMISSION FORM NUMBER V-72605.



3560 WALKER ROAD
WINDSOR, ONTARIO
N9W 3S4
519-818-0767



LaSalle File No: B-15-2024
Applicant: R & C Bouchard
Date: December 11, 2024

Title: **FIGURE 2 - SURVEY**
Notes: This document is not a Legal Plan of Survey.