



# LaSalle Fire Hall Accessibility Design Presentation

Town of LaSalle, LaSalle, ON



J.P. Thomson Architects Ltd.  
2001 Provincial Rd., Unit 6A  
Windsor, Ontario, N8W 5V7

2024-05-15



Town of LaSalle  
Fire Service  
2000 Front Rd

Fire Hall No. 2

2

**OLD FRONT RD.**

**FRONT RD.**

**GARY AVE.**

**Future  
Parking**

**Parking  
(18 Spaces)**

**Fire  
Station**

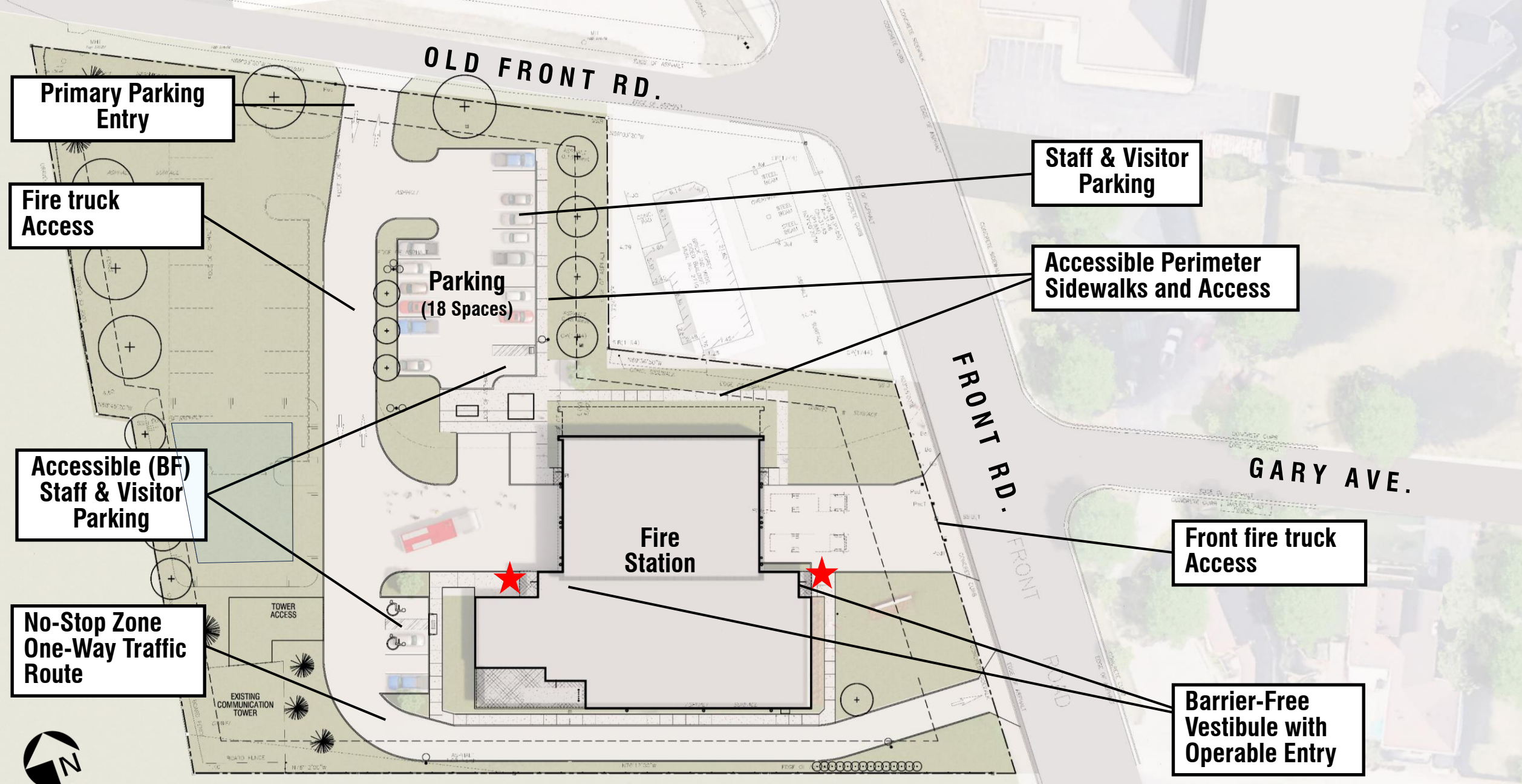
**Stormwater  
Swale**

**TOWER  
ACCESS**

**EXISTING  
COMMUNICATION  
TOWER**



**Overall Site**



**Primary Parking Entry**

**Fire truck Access**

**Accessible (BF) Staff & Visitor Parking**

**No-Stop Zone One-Way Traffic Route**

**OLD FRONT RD.**

**Parking (18 Spaces)**

**Fire Station**

**Staff & Visitor Parking**

**Accessible Perimeter Sidewalks and Access**

**FRONT RD.**

**GARY AVE.**

**Front fire truck Access**

**Barrier-Free Vestibule with Operable Entry**

**Overall Site**



**No-Stop Zone  
One-Way Traffic  
Route**

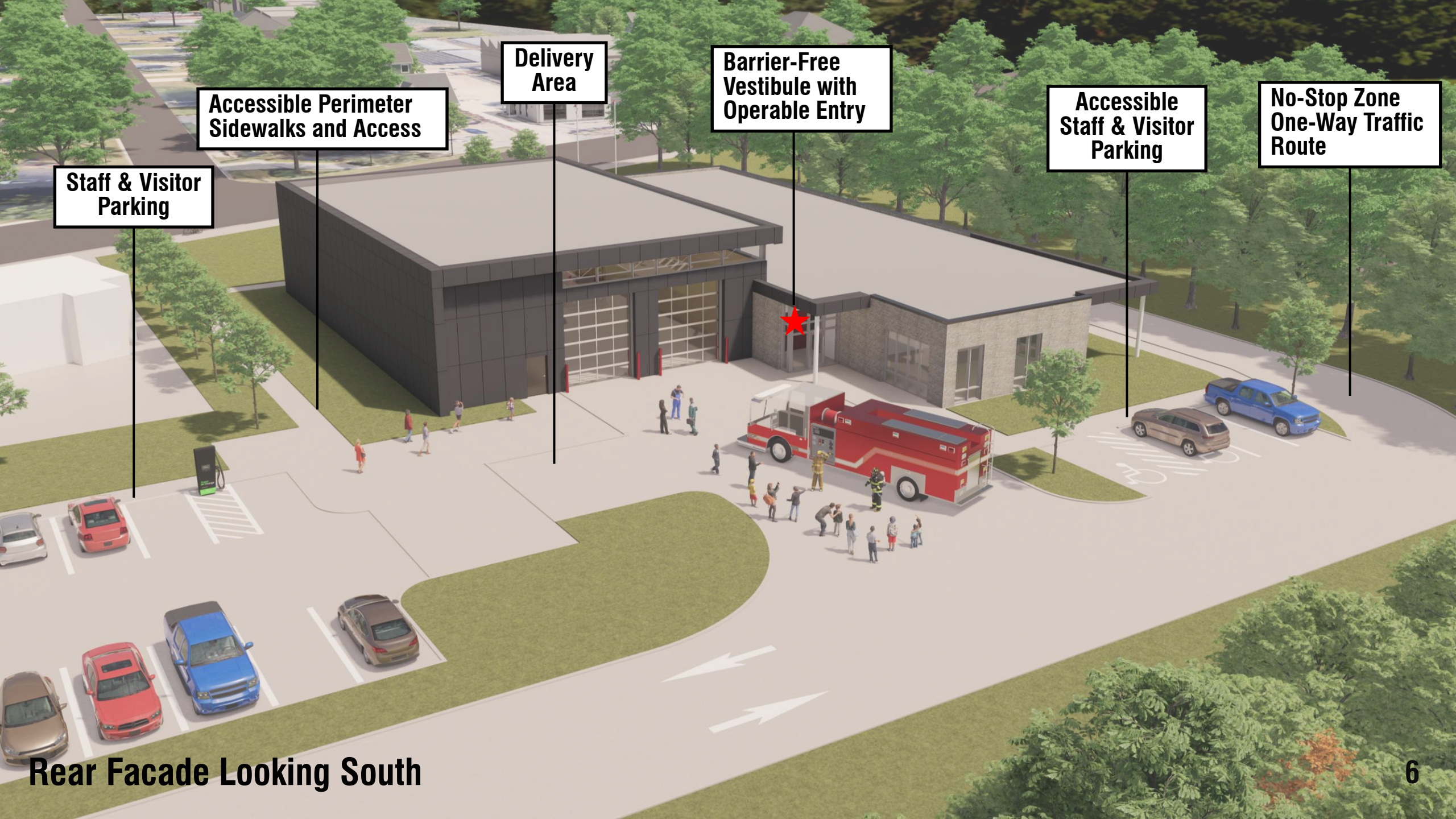
**Barrier-Free  
Vestibule with  
Operable Entry**

**Apparatus bay  
Operable Doors**

**Accessible perimeter  
sidewalks and access**

**Primary fire  
truck Access**

**Front Facade Looking West**



**Delivery Area**

**Barrier-Free Vestibule with Operable Entry**

**Accessible Staff & Visitor Parking**

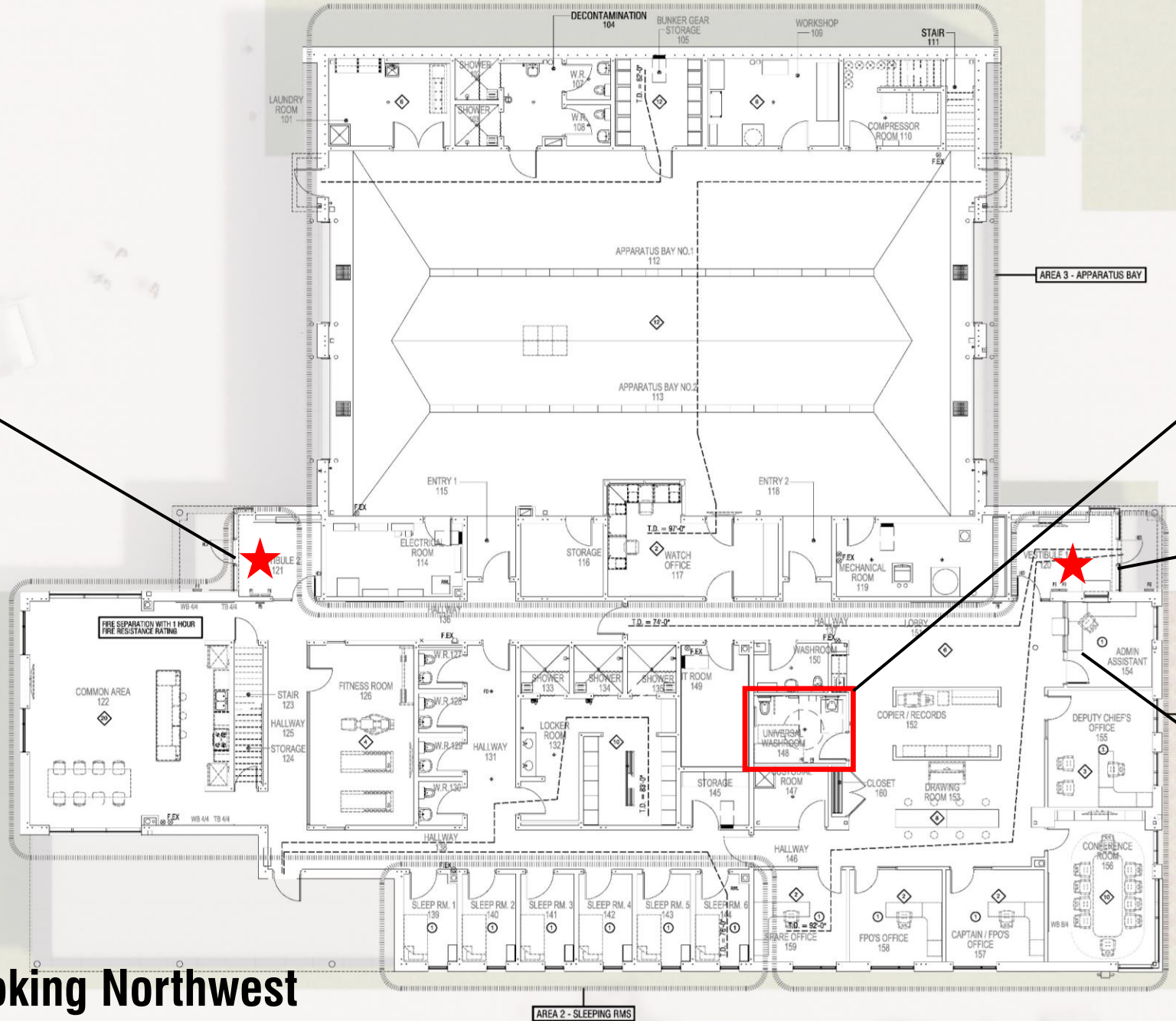
**No-Stop Zone One-Way Traffic Route**

**Accessible Perimeter Sidewalks and Access**

**Staff & Visitor Parking**

**Rear Facade Looking South**

# Aerial View Looking Northwest

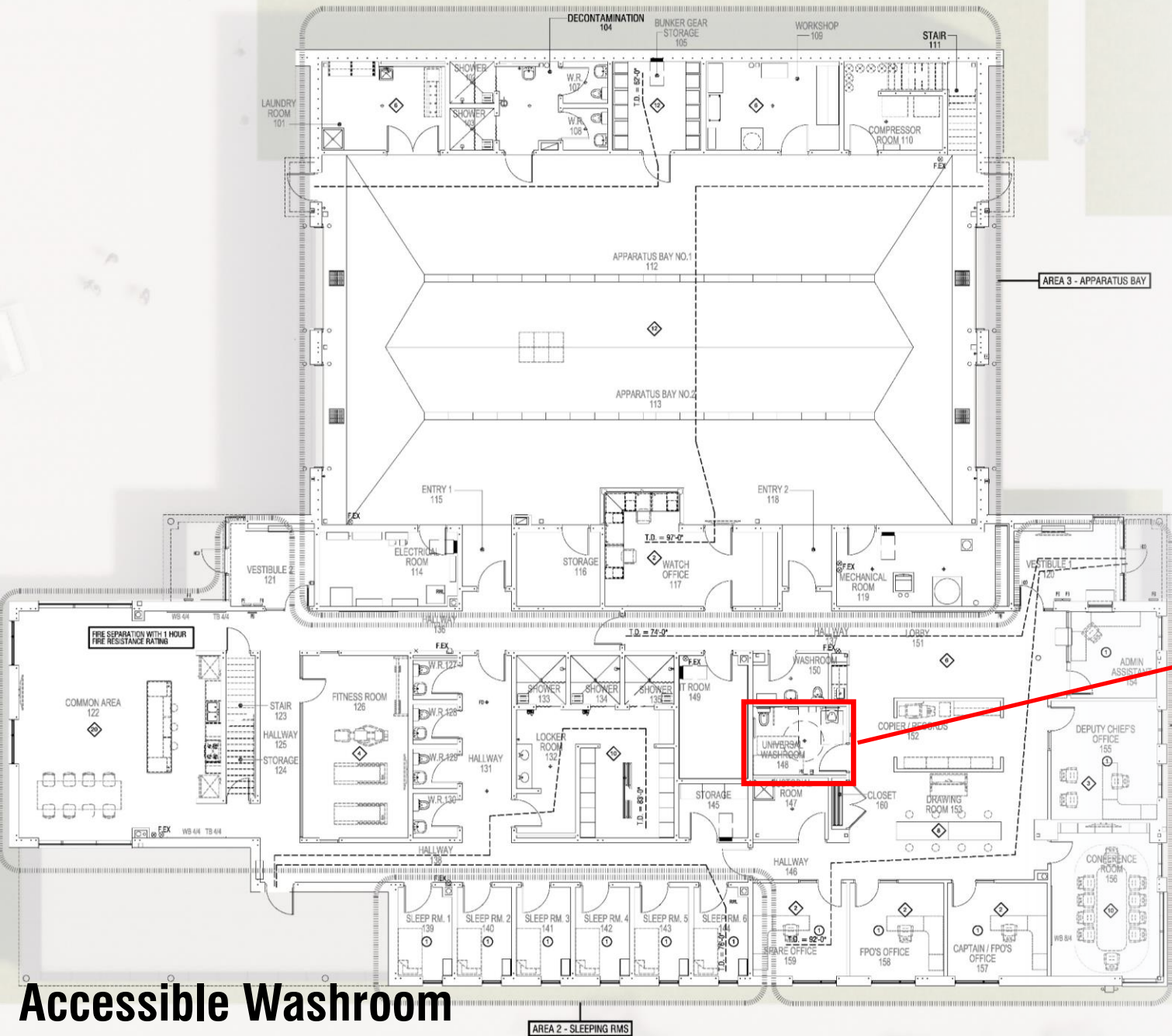


**Barrier-Free Vestibule with Operable Entry**

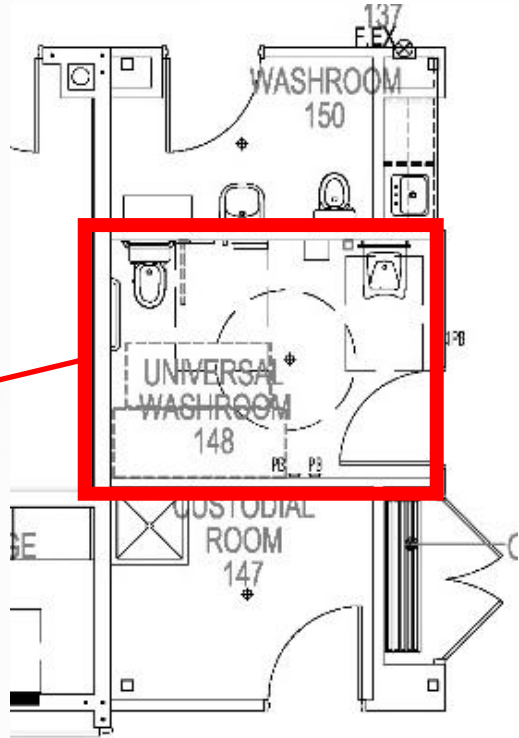
**12'-8" x 9'-3" Barrier-Free Washroom**

**Barrier-Free Vestibule with Operable Entry**

**Barrier-Free Accessible Counter**



**12'-8" x 9'-3"  
Barrier-Free  
Washroom**



**Accessible Washroom**



**Thank you...**